

Sample Ballot
Carteret County, North Carolina
November 5, 2024

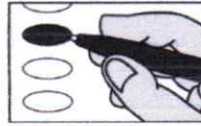
B0024



PCT: STEL_STELLA

BALLOT MARKING INSTRUCTIONS

- A. With the marking device provided or a black ball point pen, completely fill in the oval to the left of each candidate or selection of your choice as shown.
- B. Where authorized, you may write in a candidate by filling in the oval and writing the name on the Write-in line.
- C. If you tear, deface or wrongly mark this ballot, return it to request a replacement.



Vote Early
Vote Entire Ballot

PARTISAN ELECTIONS		NC Lieutenant Governor (You may vote for ONE)	NC Secretary of State (You may vote for ONE)	
President and Vice President of the United States (You may vote for ONE)		<input type="radio"/> Rachel Hunt <i>Democratic Party</i> <input type="radio"/> Wayne Jones <i>Constitution Party</i> <input checked="" type="radio"/> Hal Weatherman <i>Republican Party</i> <input type="radio"/> Shannon W. Bray <i>Libertarian Party</i>	<input type="radio"/> Elaine Marshall <i>Democratic Party</i> <input checked="" type="radio"/> Chad Brown <i>Republican Party</i>	
<input type="radio"/> Kamala D. Harris Tim Walz <i>Democratic Party</i> <input type="radio"/> Chase Oliver Mike ter Maat <i>Libertarian Party</i> <input type="radio"/> Jill Stein Rudolph Ware <i>Green Party</i> <input type="radio"/> Randall Terry Stephen E. Broden <i>Constitution Party</i> <input checked="" type="radio"/> Donald J. Trump JD Vance <i>Republican Party</i> <input type="radio"/> Cornel West Melina Abdullah <i>Justice for All Party</i> ----- Write-in	NC Attorney General (You may vote for ONE)	NC Superintendent of Public Instruction (You may vote for ONE)	<input type="radio"/> Maurice (Mo) Green <i>Democratic Party</i> <input checked="" type="radio"/> Michele Morrow <i>Republican Party</i>	
US House of Representatives District 3 (You may vote for ONE)		<input type="radio"/> Jeff Jackson <i>Democratic Party</i> <input checked="" type="radio"/> Dan Bishop <i>Republican Party</i>	NC Treasurer (You may vote for ONE)	<input type="radio"/> Wesley Harris <i>Democratic Party</i> <input checked="" type="radio"/> Brad Briner <i>Republican Party</i>
<input checked="" type="radio"/> Greg Murphy <i>Republican Party</i> <input type="radio"/> Gheorghe Cormos <i>Libertarian Party</i>		NC Auditor (You may vote for ONE)	<input type="radio"/> Wesely Harris <i>Democratic Party</i> <input checked="" type="radio"/> Brad Briner <i>Republican Party</i>	NC Supreme Court Associate Justice Seat 6 (You may vote for ONE)
NC Governor (You may vote for ONE)		<input type="radio"/> Bob Drach <i>Libertarian Party</i> <input type="radio"/> Jessica Holmes <i>Democratic Party</i> <input checked="" type="radio"/> Dave Boliek <i>Republican Party</i>	<input type="radio"/> Jefferson G. Griffin <i>Republican Party</i> <input type="radio"/> Allison Riggs <i>Democratic Party</i>	NC Court of Appeals Judge Seat 12 (You may vote for ONE)
<input checked="" type="radio"/> Mark Robinson <i>Republican Party</i> <input type="radio"/> Mike Ross <i>Libertarian Party</i> <input type="radio"/> Vinny Smith <i>Constitution Party</i> <input type="radio"/> Josh Stein <i>Democratic Party</i> <input type="radio"/> Wayne Turner <i>Green Party</i>	NC Commissioner of Agriculture (You may vote for ONE)	<input type="radio"/> Sean Haugh <i>Libertarian Party</i> <input type="radio"/> Sarah Taber <i>Democratic Party</i> <input checked="" type="radio"/> Steve Troxler <i>Republican Party</i>	<input checked="" type="radio"/> Tom Murry <i>Republican Party</i> <input type="radio"/> Carolyn Jennings Thompson <i>Democratic Party</i>	NC Court of Appeals Judge Seat 14 (You may vote for ONE)
		NC Commissioner of Insurance (You may vote for ONE)	<input type="radio"/> Ed Eldred <i>Democratic Party</i> <input checked="" type="radio"/> Valerie Zachary <i>Republican Party</i>	
		NC Commissioner of Labor (You may vote for ONE)	<input checked="" type="radio"/> Luke Farley <i>Republican Party</i> <input type="radio"/> Braxton Winston II <i>Democratic Party</i>	
		Continue voting next side →		